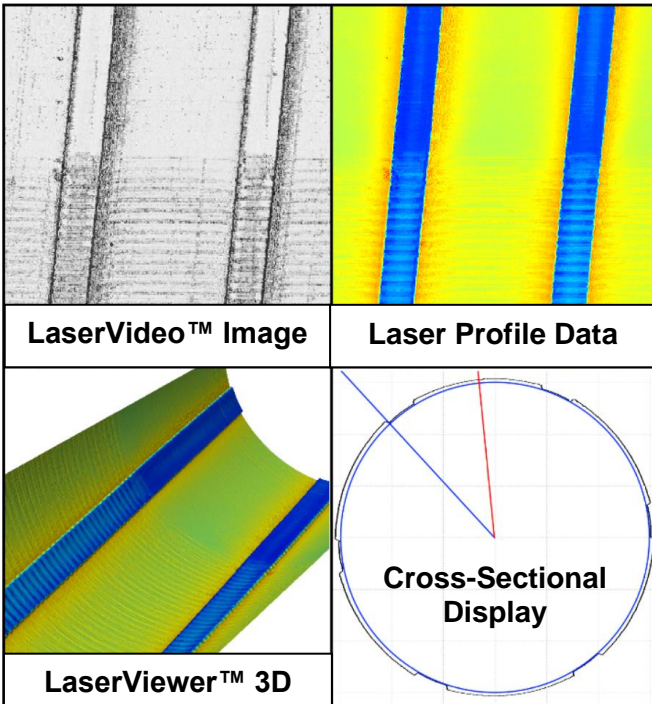


BEMIS-SC™ Small Caliber [5.56 – 12.7mm] Bore Erosion Measurement and Inspection System



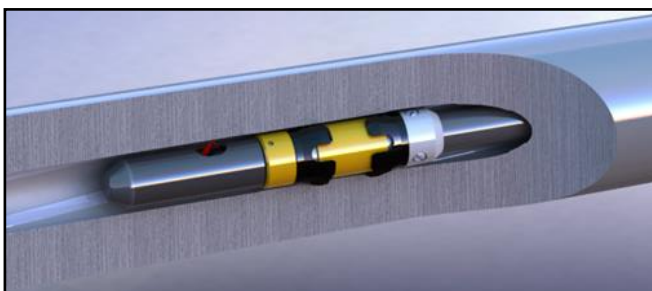
Designed to Inspect Small Caliber Weapon Bores



Outputs from a Single Scan File using LaserViewer™ Analysis Software



5.56mm Laser Profile Scanning Probe



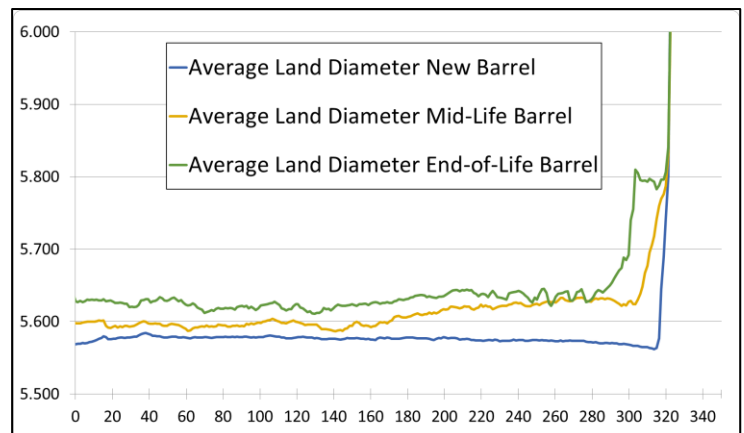
BEMIS-SC™ Probe Inside Rifle Barrel

Features & Benefits

- **High Resolution** laser-based inspection system for detailed assessment of gun barrel condition
- **Automated** inspection process removes operator subjectivity
- **3D Precision** bore erosion profiling and laser-based high-density dimensional measurements
- **High Resolution LaserVideo™** provides visual, camera-like imaging of entire gun tube surface
- **Quantitative data** for unparalleled gun tube surface and erosion analysis
- **Sensor kits** for different small caliber bore sizes are easily exchanged
- **Configurable** motion and scan control
- **Quick setup** with automatic calibration routine
- **Transportable Inspection Data** can be stored, transmitted and reviewed at remote locations
- **LaserViewer™ Analysis Software** provides a wide variety of data visualization and analysis tools, as well as and export capability
- **Automatic Report Generator Software** provides tabular and graphical summaries of test results for critical barrel parameters
- **Optional Bore Straightness Module**
- **On-Site installation and training** available

Available Sensor Delivery Units and Bore Scanner Kits

Sensor Delivery Units	Vertical Rigid Delivery Stage Horizontal Rigid Delivery Stage
Bore Sizes:	5.56mm, 6.0mm, 6.8mm, 7.62mm, 8.6mm, 12.7mm



Multiple scan reports combined to show the progression of land erosion